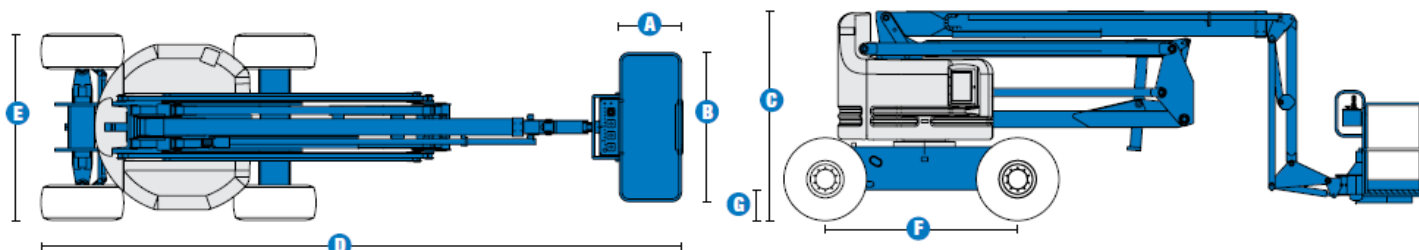




## Specifications



MODEL	Z™-60/34	
MEASUREMENTS	Metric	US
Working height maximum*	20.39 m	66 ft 4 in
Platform height maximum	18.39 m	60 ft 4 in
Horizontal reach maximum	11.05 m	36 ft 3 in
Up and over clearance maximum	8.23 m	27 ft
A Platform length	0.91 m	3 ft
B Platform width	2.44 m	8 ft
C Height - stowed	2.69 m	8 ft 10 in
D Length - stowed	8.15 m	26 ft 9 in
E Width	2.46 m	8 ft 1 in
F Wheelbase	2.51 m	8 ft 3 in
G Ground clearance - centre	0.41 m	1 ft 4 in

PRODUCTIVITY		
Lift capacity	227 kg	500 lbs
Platform rotation	180°	180°
Vertical jib rotation	90°	90°
Turntable rotation	360° continuous	
Turntable tailswing	zero	zero
Drive speed - stowed	4.8 km/h	3.0 mph
Drive speed - raised**	1.1 km/h	0.68 mph
Gradeability - 4WD - stowed***	40%	40%
Turning radius - inside	3.04 m	10 ft
Turning radius - outside	6.07 m	19 ft 11 in
Controls	12V DC proportional	
Tyres - RT Lug - Foam filled	385/65 D19.5	

POWER		
Power source	Deutz D2011L03i 3-cylinder diesel 35.8 kW (48 hp)	
Auxiliary power unit	12V DC	12V DC
Hydraulic tank capacity	170.3 L	45 gal
Fuel tank capacity	75.7 L	20 gal

WEIGHT****		
	11,800 kg	26,014 lbs

STANDARDS COMPLIANCE	ANSI A92.5, CSA B354.4, CE Compliance, AS 1418.10
----------------------	---

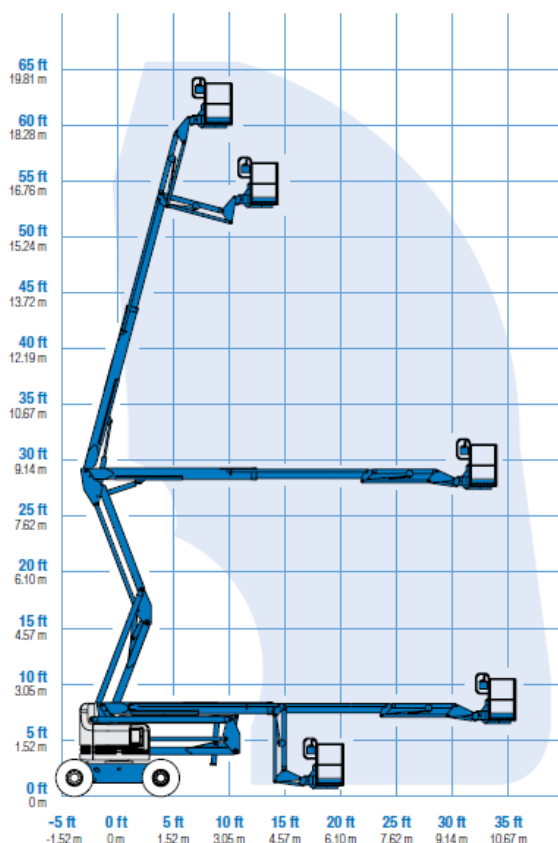
\* The metric equivalent of working height adds 2m to platform height. U.S. adds 6 ft to platform height.

\*\* In lift mode (platform raised), the machine is designed to operate on firm, level surfaces only.

\*\*\* Gradeability applies to driving on slopes. See operators manual for details regarding slope ratings.

\*\*\*\* Weight will vary depending on options and/or country standards.

## RANGE OF MOTION Z™-60/34



MOVIMENTAZIONI INDUSTRIALI - NOLEGGI  
TRASPORTI ECCEZIONALI - COLLAUDO BILANCINI

### NOVA ENERGIN Srl

Via Battelli, 2/a  
61032 - FANO (PU)  
Tel 0721 867373  
p.iva IT 02317770424



## Features

### STANDARD FEATURES

#### MEASUREMENTS

- 20.39 m (66 ft 4 in) working height
- 11.05 m (36 ft 3 in) horizontal reach
- 8.23 m (27 ft) up and over clearance
- Up to 227 kg (500 lbs) lift capacity

#### PRODUCTIVITY

- 2.44 m (8 ft) steel platform
- 1.83 m (6 ft) jib boom with 90° working range
- 4WD
- Full-time active oscillating axle
- Rough terrain foam-filled tyres
- Self-leveling platform
- Hydraulic platform rotation
- Fully proportional controls
- Drive enable
- Horn
- Hour meter
- Tilt alarm
- 360° continuous turntable rotation
- Locking turntable covers
- Zero tailswing
- Positive traction drive
- 2 speed wheel motors
- Engine gauge package
- Thumb rocker steer
- Alarm package
- Dual flashing beacons

#### POWER

- 12 V DC auxiliary power
- Deutz diesel 35.8 kW (48 hp)
- Engine protection package
- Anti-restart engine protection
- Auto engine fault shutdown
- Intake air heater

### OPTIONS & ACCESSORIES

#### PRODUCTIVITY

- Platform swing gate
- Half mesh platform inserts with swing gate
- Platform top auxiliary rail
- Hydraulic oil cooler
- Air line to platform
- Fire resistant hydraulic oil
- Biodegradable hydraulic oil
- Deluxe aircraft protection package
- Basic hostile environment kit
- Deluxe hostile environment kit
- Tool tray
- Fluorescent tube caddy
- Platform work lights
- Front driving lights
- Lockable platform control box covers
- 1.83 m (6 ft) steel platform

#### POWER OPTIONS

- 240 V power to platform
- 7 kVA hydraulic generator (240 V/50 Hz)
- Cold Weather Packages
- Retained key selector switch



MOVIMENTAZIONI INDUSTRIALI - NOLEGGI  
TRASPORTI ECCEZIONALI - COLLAUDO BILANCINI

**NOVA ENERGIA Srl**

Via Battelli, 2/a  
61032 - FANO (PU)  
Tel 0721 867373  
p.iva IT 02317770424